

The complete list of sparks™ in Tinder

BadTV	Elements	Plasma
Bandlimit	Etch	Polar
Beam	Fire	Pond
Blob	Flatten	Pong
Blur	Fractal	PseudoColour
BlurChannels	Glass	Qube
BlurMasked	Glow	RadialBlur
BumpShade	Grad	Rain
Cartoon	GradientBlur	Rays
Caustic	Grain	Rewire
Chromatic	HeatHaze	Ripple
CircBlur	Kaleid	RomanMosaic
Compare	Laser	Shaff
CompareMotion	Lens	Shape
Condensation	LensBlur	Silk
Contour	LensBlurComp	Sky
Copyflicker	LensFlare	Sonic
CrashZoom	Lightning	SpinBlur
Deband	Median	Split
Defield	MeltTime	Starburst
Deflicker	MinMax	Starfield
Degrain	Mix	Strobe
Diffuse	MixMatte	Stutter
DiffusionFilter	Mosaic	Swirl
Dilate	MuzzleFlash	Tile
DirBlur	Newsprint	Tint
Distorto	NightSky	Trail
DoubleVision	Noise	Turner
Droplet	OldFilm	TVDots
EdgeBlock	Paint	Wipe
EdgeDetect	Pattern	Wobble

Tinder 5.0 supports Discreet on Linux, Irix and Burn.

All sparks are fully multi-processing and 8 bit & 12 bit colour depths are supported. Proxy rendering and field rendering are included as standard. A PDF colour User Guide describing each spark in detail is also supplied.

Online help, telephone and email support and minor product upgrades such as bug fixes are included as standard.

Want a license?

Download the software from our website, www.thefoundry.co.uk. A license can be requested from the website or you can email your sysinfo to licenses@thefoundry.co.uk

Sparks in **bold** are the new additions to Tinder



the foundry

General

Also available on **discreet***

Furnace

Furnace, based on motion estimation, is a suite of plug-ins to help compositors correct common problems when working on effects shots.

Keylight

Keylight is an Academy award winning blue/green screen keyer.

Anvil

Anvil is the premier collection of colour correction and colour manipulation tools.

The Foundry

1 Wardour Street
London
W1D 6PA
UK

T: +44 (0) 20 7434 0449

F: +44 (0) 20 7434 1550

E: info@thefoundry.co.uk

W: www.thefoundry.co.uk

Discreet is a division of Autodesk, Inc. Discreet, burn, fire, flame, flint, inferno, smoke and sparks are either registered trademarks or trademarks of Autodesk, Inc./Autodesk Canada, in the USA and/or other countries.

Tinder is copyright 1996-2005 by The Foundry Visionmongers Ltd.

The Foundry logo is a registered trademark of The Foundry Visionmongers Ltd.

Computer Film Tools is copyright 1988-2005 The Computer Film Company.

Anvil is copyright 1997-2005 The Foundry and First Art.

Irix® is either a registered trademark or trademark of Silicon Graphics, Inc., in the United States and/or other countries worldwide.

Linux is a free Unix-type operating system originally created by Linus Torvalds with the assistance of developers around the world.

*The leftmost lightning bolt was created using Tinder on Flame. The other bolts are real.



sparks for discreet



Tinder - a vast collection of plug-ins that extend the creative possibilities of flame, flint, Inferno, fire or smoke. Most effects come with scores of parameters that can be keyframed to give a very individual look or you can choose from a number of popular saved presets. The plug-ins take advantage of additional processors and have been designed to work at video or film resolutions and multiple colour depths. The Foundry products are used extensively in film post production helping digital artists on Lord of the Rings, Tomb Raider and Armageddon.



BadTV BadTV Security Camera BadTV Edge Distortion BadTV Interference



OldFilm B&W OldFilm Forties OldFilm Modern



One or more of these lightning bolts are computer generated with Tinder's **Lightning!**



Plasma using Tinder's **Lightning**

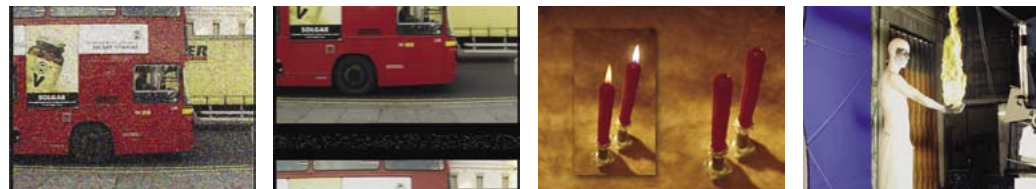


Four images using a variety of Tinder sparks. Pictures courtesy of Method Studios for Merrill Lynch, AT&T and Cadillac Seville.

Tools These 18 Tools aren't the most glamorous but they'll help you get the job done. Erode your mattes with sub-pixel precision using **Dilate**. This superior plug-in also includes some sophisticated compositing tools and spill suppression.

Analyse a sound clip and set-up keyframes with **Sonic**. **Rewire** colour channels. **Compare** clips. Copy and remove **Flicker**. Convert fields to frames using **Defield**. Add and remove **Grain**. Intelligently **Deband** 8 bit images or add camera shake with **Wobble**.

Blurs Choose from 11 different blurs. New blurs making a debut are **Silk**, which gives the look of being airbrushed while cleverly keeping sharp edges. **CrashZoom** and **SpinBlur**. Our sub-pixel quality **Blur** is very very fast and unusually it doesn't slow down with size. Simulate proper camera defocus, highlight



BadTV Snow BadTV Vertical Roll Candles and statue with flame effects using Tinder's **Fire**



OldFilm Sepia Dolphins and stained glass window enhanced with **Shaft**



Above: Water droplets using **Condensation**
Right: Before it started to rain.



Above: Original image
Below: With **Cartoon**

Effects Choose from almost 40 effects to enhance any project. Add scratches, dust, flicker and more with **OldFilm**; simulate poor television reception with **BadTV**; drip water on glass with **Condensation**; add an interesting grade with **DiffusionFilter**; view images through **Glass**; add a

blooming and chromatic aberration with our superior plug-in **LensBlur**; smear pixels in one direction with **DirBlur**; crash zoom with **RadialBlur** or give the appearance of motion blur on a rotating object with **CircularBlur**. Why not try **GradientBlur**. This blurs according to the gradients of the optional matte input.

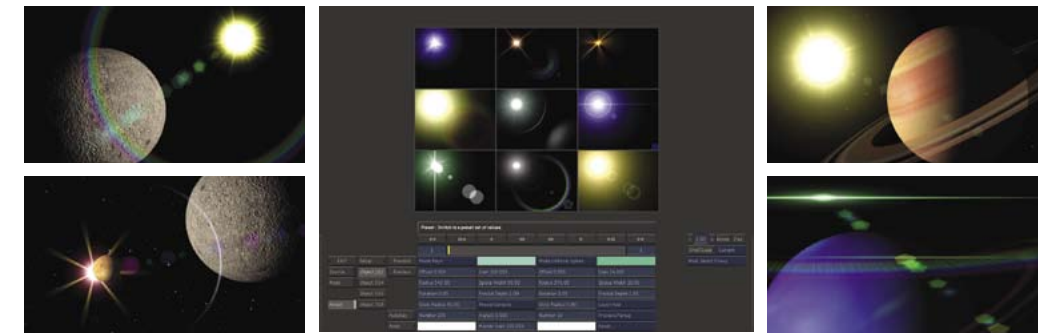
Warpers We have 7 warpers that bend and distort your image. Most useful is **Distorto** that provides a generalised distortion of one image using the luminance of another. Often used to fake the distorted reflections during the composite rather than in 3D.

If you need water effects then try **Droplet**, **Pond** and **Ripple**. Wrap pixels around a point with **Swirl**. Or bulge an image with **Lens**. It can be used to correct for lens distortions or simulate wide angled lenses.



GradientBlur can produce a very effective painterly look

Rack defocus showing highlight blooming and chromatic aberration using Tinder's **LensBlur**



Screen shot showing Tinder's multi-select feature on the presets in **LensFlare**



Animated burn through using Tinder's **OldFilm**

Generators Choose from 18 clip generators. View the reflected light patterns seen at the bottom of swimming pools with **Caustic** or use it to breakup mattes; simulate fire, smoke, fog, snow and water with our **Elements** particle effect; choose from a dozen

presets to get that perfect **LensFlare**; try our superior **Lightning** generator; view the constellations with **NightSky**; watch the sun dip beneath the horizon with **Sky**; create organically evolving fractal patterns with **Plasma** or zoom through an infinite **Starfield** in 3D!